

Clamps, Grabs & Tongs



Model BFC - Beam Flange Clamps

IN-STOCK PROGRAM



**OPTION LB
Large Bail**



PRODUCT FEATURES:

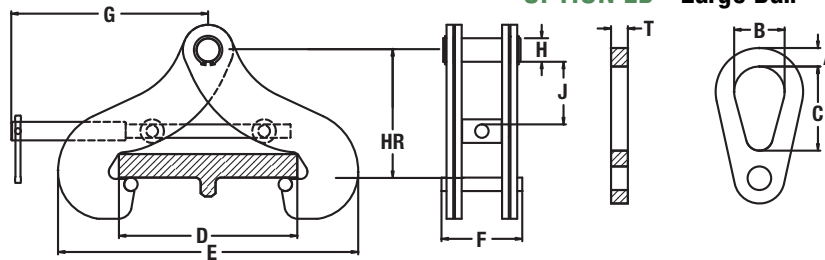
- Rated load capacities from 1 to 10 metric tons.
- Proof test with certificate.
- Lightweight and portable design.
- Left-hand thread and right-hand thread screw spindle allows for rapid clamping and unclamping.
- Lock nut prevents inadvertent loosening of clamp.
- Jaw opening adjusts to a wide range of beam types and flange widths.
- Use only for vertical loading.
- Built-in suspension pin provides lower headroom.
- Powder coated finish.
- Available with Large Bail option for oversized hoist hooks.
- 5:1 design factor meets portions of ASME B30.16.
- Complies with ASME B30.20 and BTH-1 standards.

SPECIFICATIONS

Model Number	Rated Capacity (lbs.)	Dimensions (inches)													Weight (lbs.)
		D		E	F	G	H Diameter	J	Option LB				HR Headroom (in.)		
		Min.	Max.	Max.					A	B	C	T	@ Man. D	@ Mix. D	
BFC-1	2200	3.00	7.50	12.25	3.00	9.25	0.88	2.10	0.75	2.00	2.00	0.63	3	5	8
BFC-2	4400	3.00	7.50	12.25	3.00	9.25	0.88	2.10	0.75	2.00	2.00	0.63	3	5	9
BFC-3	6600	6.00	12.00	19.75	4.25	11.00	1.25	2.38	1.00	2.50	2.50	1.00	4.5	7.5	19
BFC-5	11000	6.00	12.00	19.75	4.25	11.00	1.25	2.38	1.00	2.50	2.50	1.00	4.5	7.5	22
BFC-10	22000	6.00	13.25	22.50	6.00	14.63	1.75	4.65	1.38	3.75	6.25	1.25	7.5	10.25	50

NOTE: Weights are for clamp only.

OPTION LB - Large Bail



Applications



Allows for the capability of hanging hoists or rigging from an overhead load bearing structure.



For lifting and positioning structural beams. Can be used in pairs in conjunction with a spreader beam for additional versatility.